

**永祥**<sup>®</sup>  
YONGXIANG

**MMJP150X4C**  
**MMJP120X4C**

**白米分级筛**  
WHITE RICE GRADED



专利产品：专利号 ZL201520543980X

**湖北永祥粮食机械股份有限公司**

**HUBEI YONGXIANG FOOD PROCESSING MACHINE CO.,LTD.**

## 用途简介

MMJP150×4C/120×4C 白米分级筛是采用吊杆式结构的新型白米分级设备，它利用大米颗粒大小的差异，通过四层不同孔径筛板的连续筛理，分离出整米、一般米、大碎和小碎，从而达到白米分级的目的。该机还可用于白米的分类，是现代碾米企业筛选整理工序理想的设备。

## 产品特点

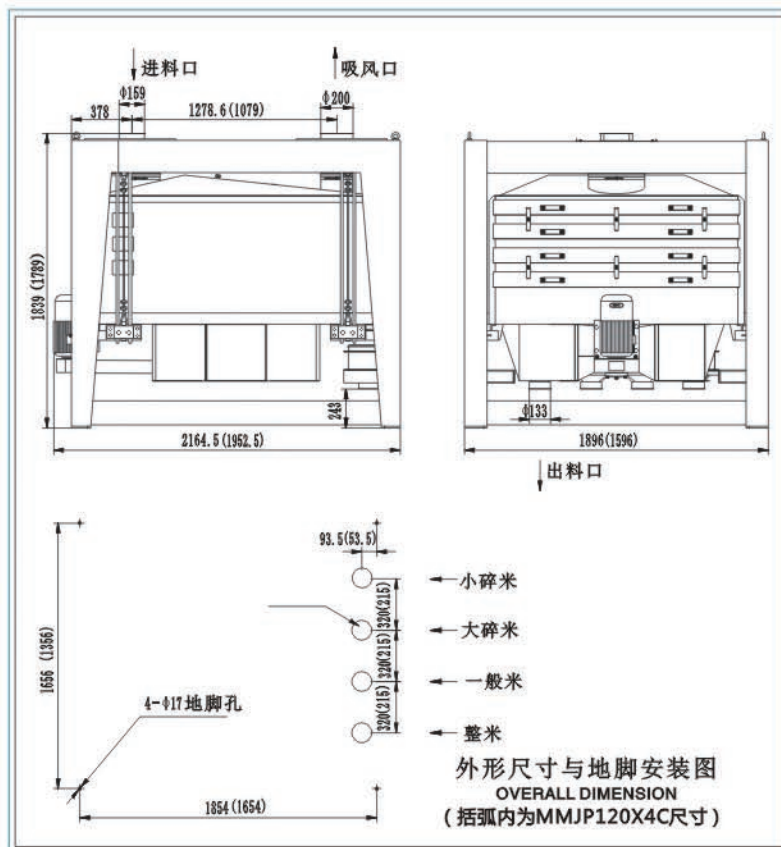
- 本机筛体采用吊杆式结构，由获得国家专利技术的驱动系统驱动，皮带传动，结构紧凑合理，运转平稳可靠，维修简单方便，噪音小，使用寿命长，性能良好；
- 单位筛理面积大、产量高，分离效果好；
- 筛格采用抽屉式结构，方便用户调整和更换不同孔径的筛格，适应不同粒型大米分级整理需要；
- 机架稳定牢固，经久耐用；

### USE INTRODUCTION

MMJP150×4C/120×4C rice grader is a new equipment with structure of hanger rod type, which uses the size difference of rice continuously screening through four layers sieves with different meshes to separate the whole rice, common rice, large and small broken rice so as to achieve the purpose of rice grading. The machine can be also used for rice classification. It is an ideal screening equipment for modern rice milling plant.

### FEATURES

- The machine derrick structure is used to sieve body, driven by national patent technology of driving system, belt drive, compact structure and reasonable, stable running and reliable, simple and convenient maintenance, low noise, long service life, good performance;
- Big screen area, high yield, good separation effect;
- Mesh adopts draw-out type structure, convenient user adjustment and change of different aperture the size and the shape of mesh, adapt to different rice grading finishing needs;
- Machine body is stable and solid, durable;



## 主要技术参数 MAIN TECHNICAL DATA

型号 Type	MMJP150×4C	MMJP120×4C
处理量 Output(t/h)	5.5-7	4.5-6
配备动力 Power(kw)	1.5	1.5
机重 Weight(kg)	1400	900
外形尺寸 Dimention(mm)	2165X1896X1839	1953X1596X1789

产品技术参数如有变更恕不另行通知 If technologic data has been changed without further information

通过ISO9001国际标准质量体系认证 ISO 9001-2008 Certified

E-mail:yongxiangmiji@sohu.com http://www.hbyxlj.com

地址：湖北省安陆市府河大道2号

ADD: 2 FUHE AVE., ANLU CITY, HUBEI, CHINA

电话(TEL): 0712-5254443 5254445 5258762 传真(FAX):0712-5254443 邮编(POSTCODE): 432600